

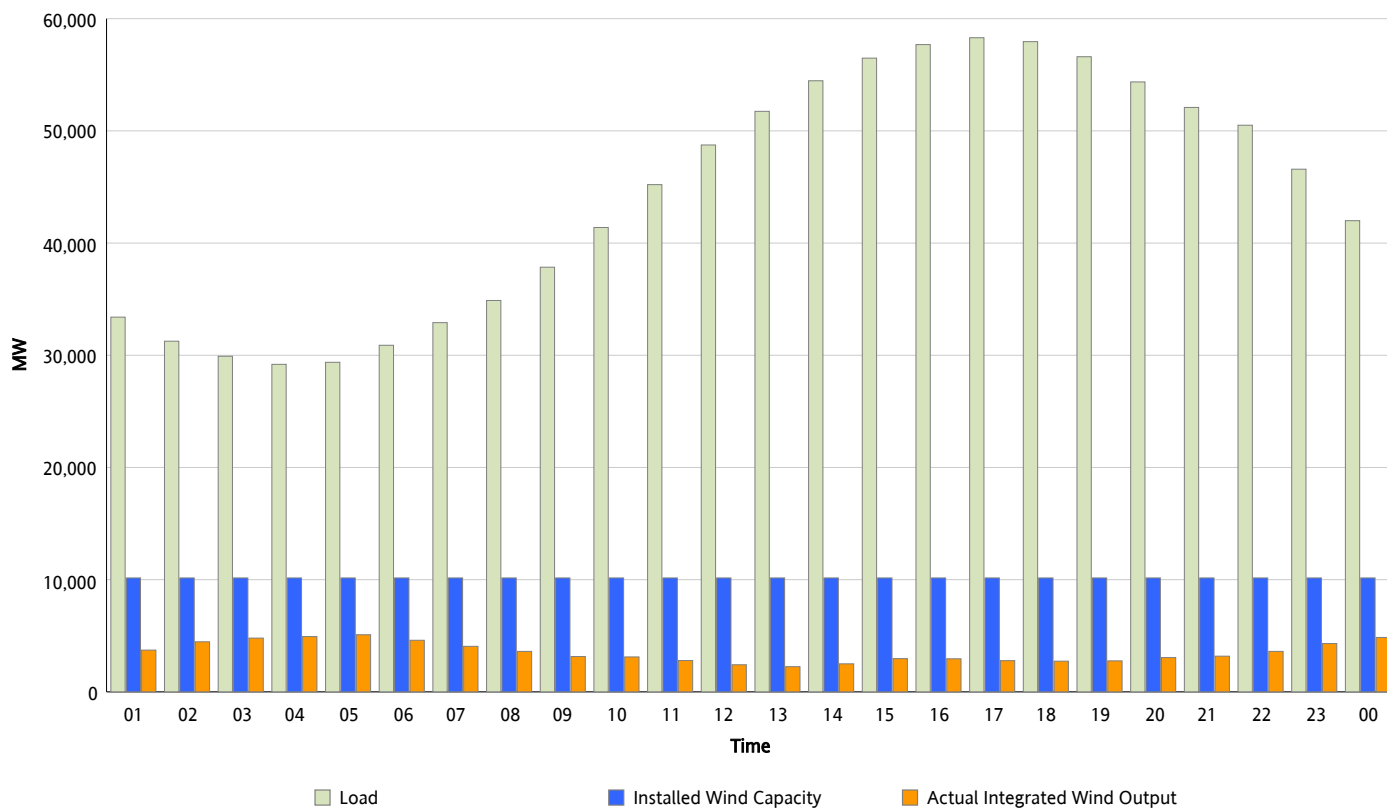


ERCOT Grid Operations

Wind Integration Report : 06/10/2013

Peak Load	58,304 MW
Load Peak Hour (HE)	17
Wind Over Peak	2,782 MW
Wind Record 05/02/13	9,674 MW
Max Wind Value*	5,182 MW
Wind Peak Time	04:14
Wind Integration %	17.62 %

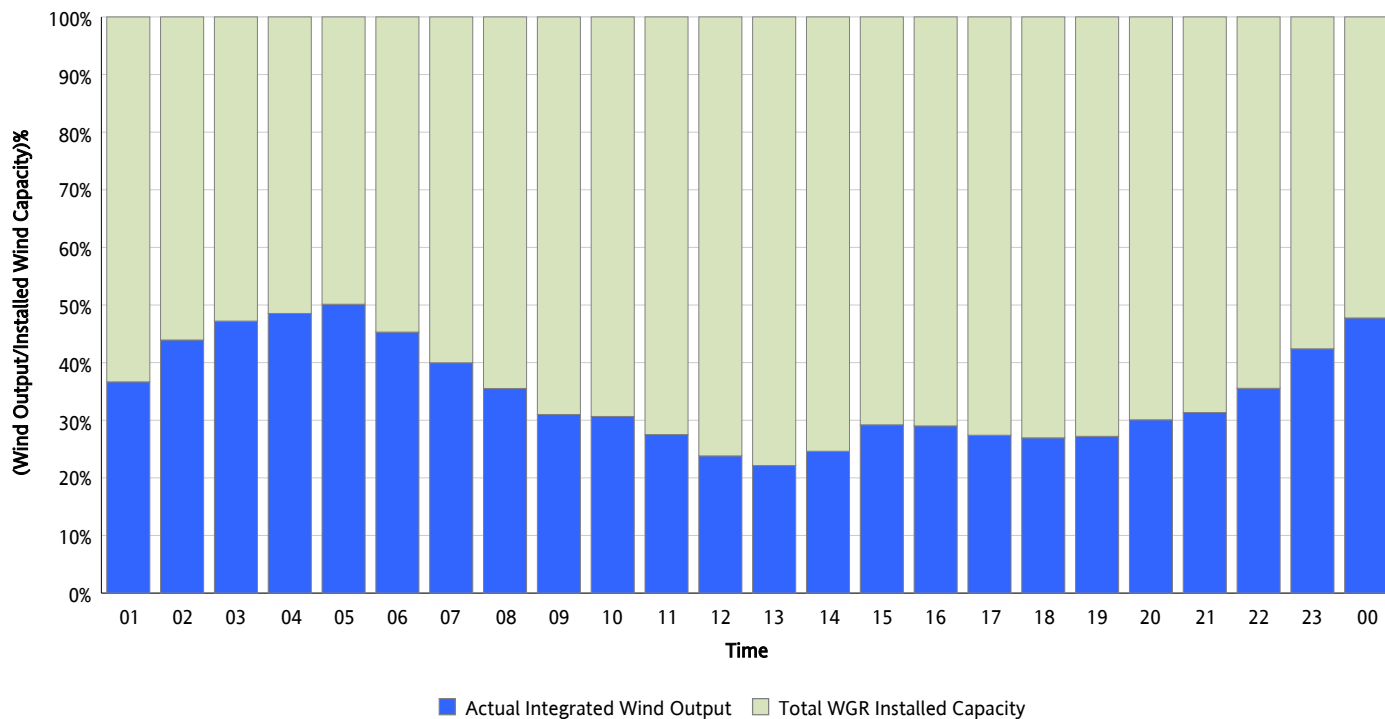
Hourly Average Actual Load vs. Actual Wind Output
06/10/2013



** Wind Record and Wind Max represent instantaneous values and the rest of the values are integrated over the hour*

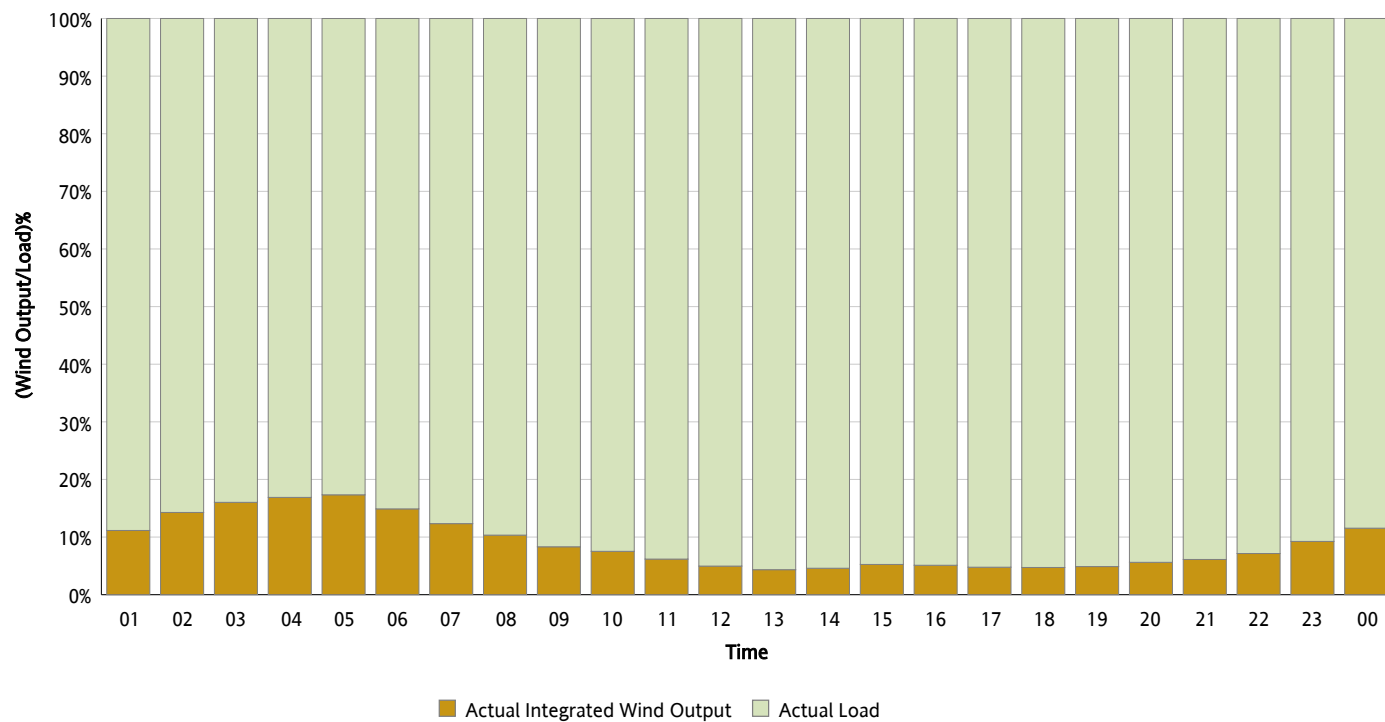
Actual Wind Output as a Percentage of the Total Installed Wind Capacity

06/10/2013



Actual Wind Output as a Percentage of the ERCOT Load

06/10/2013



ERCOT Load vs. Actual Wind Output

06/03/2013 - 06/10/2013

